

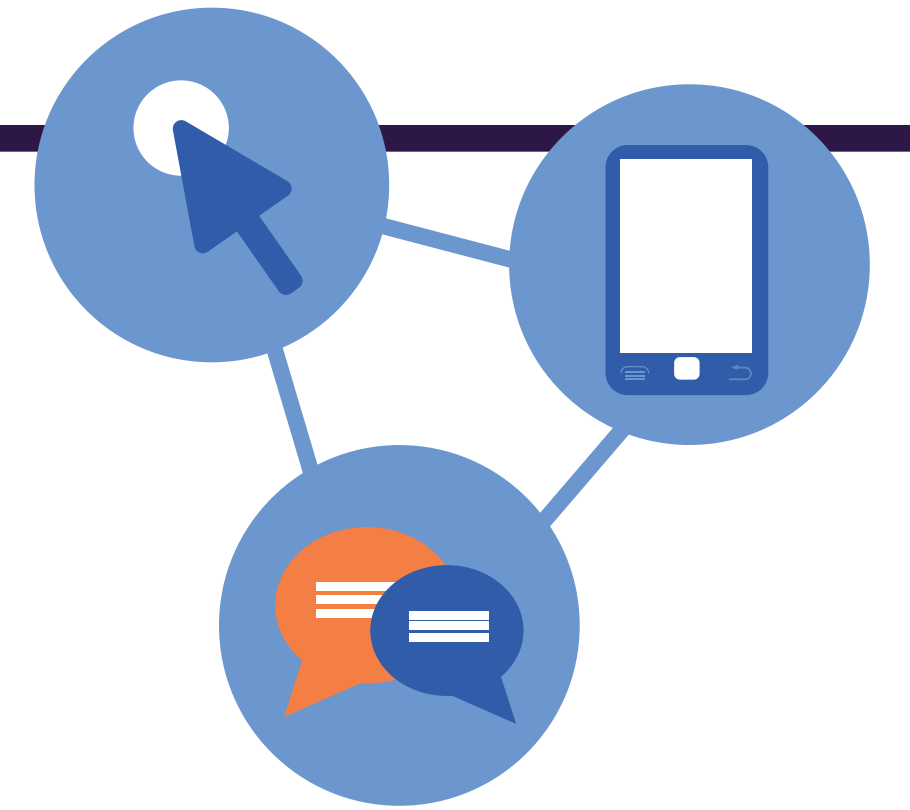
GENDER INCLUSIVE RESTROOM MAPPING

In partnership with:

- Office of the President and Provost · John A. Paulson School of Engineering and Applied Sciences · Title IX Office · Harvard Medical School ·
- Office of BGLTQ Student Life, Harvard College · Harvard Divinity School · Faculty of Arts and Sciences · Harvard Planning Office · and University allies.

PROJECT SUMMARY

The Gender Inclusive Restroom Mapping project for Harvard University seeks to ensure that all Harvard community members, including those who are transgender, gender nonbinary, and gender nonconforming, have accurate and inclusive means of locating restrooms at Harvard. Specifically, the project will inventory and discreetly communicate, via a web application, the location of gender inclusive restrooms across Harvard’s Cambridge, Allston, and Boston campuses.



PROGRESS TO DATE

Our project is comprised of four Working Groups, each with their own charge in support of the project mission.



Signage Working Group

Reviewed existing signage at Harvard and at peer institutions; facilitated focus groups that enlisted community feedback and assessed community needs. Developed executive summary of proposed signage, recommendations, and rationale.



Inventory Working Group

Inventoried existing inclusive restrooms; updated inventory records; identified potential additional single user inclusive restrooms.



Mapping Technologies Working Group

Reviewed existing mapping of inclusive restrooms within School/units; reviewed best practices at other institutions; facilitated focus groups that enlist community feedback and assess community needs; identified effective mapping technologies.



Promotion and Communication Working Group

In ongoing consultation with other working groups to manage all communications efforts, including promotion/awareness campaign.



WHAT'S AHEAD

Looking ahead, as we consider the Mapping Technologies Working Group’s recommendations and collaborate with the Harvard Planning Office, we will develop a dedicated online interactive map highlighting gender inclusive restroom on Harvard’s campuses. Members of the Harvard community will be able to search for and find detailed information about each restroom.



INTENDED IMPACT

Discrimination against transgender, gender nonbinary, and gender nonconforming people in public restrooms often leads to experiences of anxiety around restroom use, restroom avoidance, and lack of restroom access. Deemed a public health concern, these issues can lead to various health problems. Members of the Harvard community are often required to travel to multiple buildings for meetings, classes, and events, which can exacerbate this risk. It is critical that Harvard community members and guests have the tools to easily navigate the campus and experience the Harvard community as inclusive and respectful to all. A single, web-based application will offer specific, practical, and discreet access to safe restrooms, no matter where they are at Harvard. This reduces time spent searching for such facilities, ameliorates fears surrounding exclusion or harassment, and signals in a high-impact, low-cost fashion that Harvard is a community in which we not only celebrate diversity—we honor it.

